

HILLSBOROUGH COUNTY BENCHMARKS IN GOOGLE EARTH

By Thomas G. Davis¹, PhD, PE, PLS;
L. Scott Brown², PLS; and Rollins Turner³, PhD

INTRODUCTION

HCBM (<http://www.metzgerwillard.us/hcbm/>) is a web-based service for visualizing Hillsborough County benchmarks (Fig. 1) in Google Earth that provides an easy-to-use framework for retrieving LABINS and NGS datasheets.

HCBM also includes multiresolution images of the original Hillsborough County benchmark maps (Fig. 2), network links that plot COT (Fig. 3) and NGS (Fig. 4) benchmarks, and hyperlinks to benchmark-related, online resources.

HCBM

The principal component of HCBM is a Google Earth KML (Google 2009) document that plots the approximate location of Hillsborough County benchmarks from the LABINS database (FDEP 2003). All station balloons have links to the corresponding LABINS datasheet, and stations with an NGS PID also have links to the NGS database. Station balloons contain corrective remarks for stations with errors or omissions in the LABINS database.

Marks are collected in three folders that are categorized by status and elevation from LABINS datasheets:

- Poor (red) = Destroyed, Could Not Find, or no elevation
- Fair (yellow) = NGVD 29 elevation only
- Good (green) = Both NGVD 29 and NAVD 88 elevations

HCBM comprises 2118 stations from the original PDF maps and an additional 98 stations from the LABINS database. Stations depicted on the PDF maps are a subset of the 2572 stations in the LABINS database. Of the 454 stations in the LABINS database that are not on the PDF maps, 356 fall in the Poor category and are not included in HCBM. Of the 2216 stations composing HCBM, 2146 stations have horizontal coordinates that were provided by NGS datasheets or the Hillsborough County Geomatics Division; the remaining 70 stations have locations that were scaled with reference to LABINS datasheets.

¹ Metzger + Willard, Inc., 8600 Hidden River Parkway, Suite 550, Tampa, FL 33637.
E-mail: tdavis@metzgerwillard.com

² George F. Young, Inc., 1921 Tampa East Boulevard, Tampa, FL 33619.
E-mail: sbrown@georgefyoung.com

³ Computer Science and Engineering, University of South Florida, Tampa, FL, retired.
E-mail: rollins@tampabay.rr.com

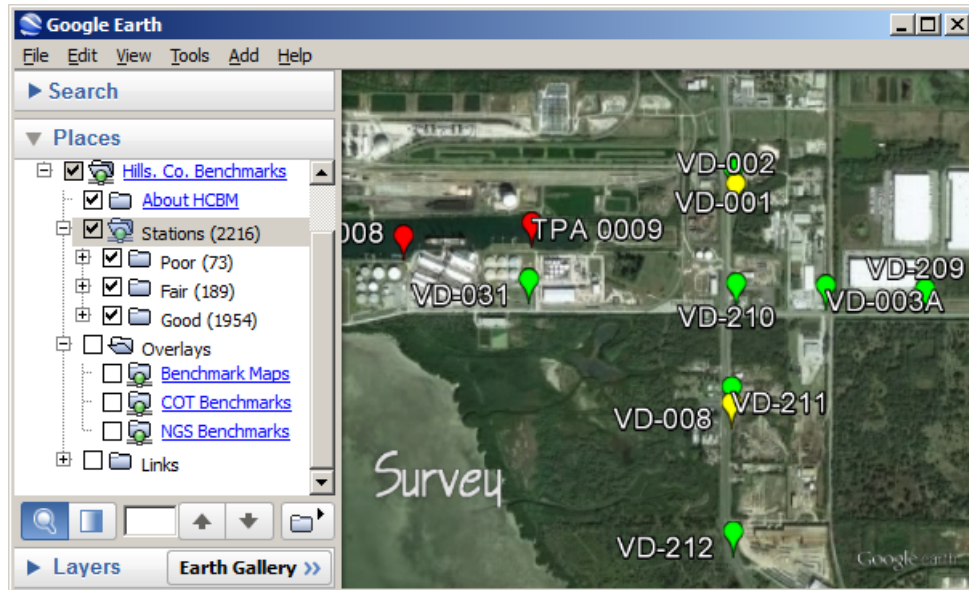


Figure 1. County Benchmarks

County Benchmark Maps

Original PDF benchmark maps were converted to 300-dpi JPEG files, georeferenced using the County PLSS shapefile, and then converted into 352 tiles that are delivered by the HCBM server via region-based network links (super-overlay).

Seams are located on the W line of Range 20 E and the N line of Township 30 S, all four original maps having a common point at the NW corner of Section 6, Township 30 S, Range 20 E.

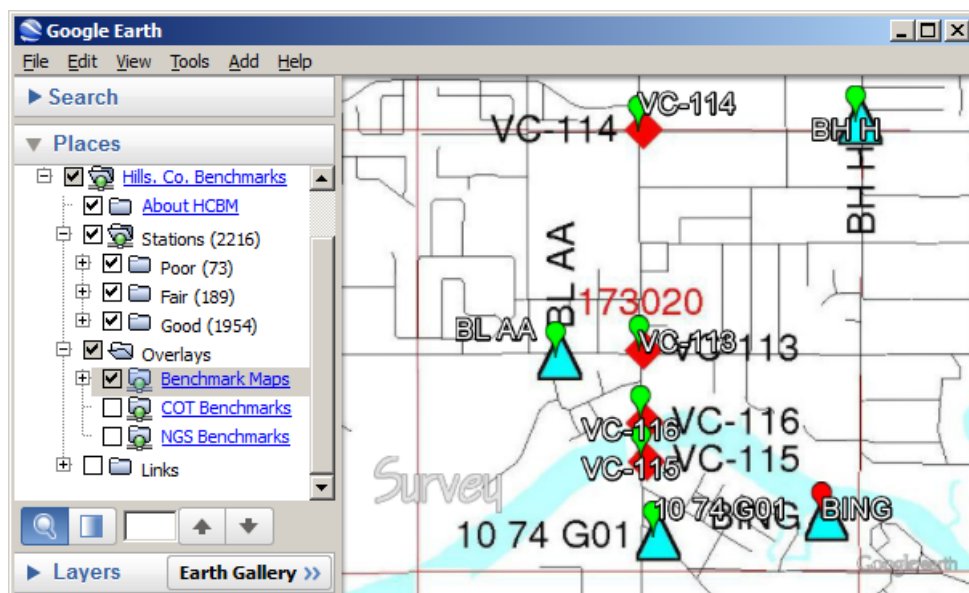


Figure 2. County Benchmark Maps

Legacy benchmark maps are included primarily as an aid in verifying that benchmarks are correctly named and located.

City of Tampa (COT) Benchmarks

The *COT Benchmarks* network link plots the approximate location of COT benchmarks. Content is adapted from COT Primary Benchmarks (COT 2016a) prepared by the City of Tampa Survey Section (COT 2016b) on 02/23/16.

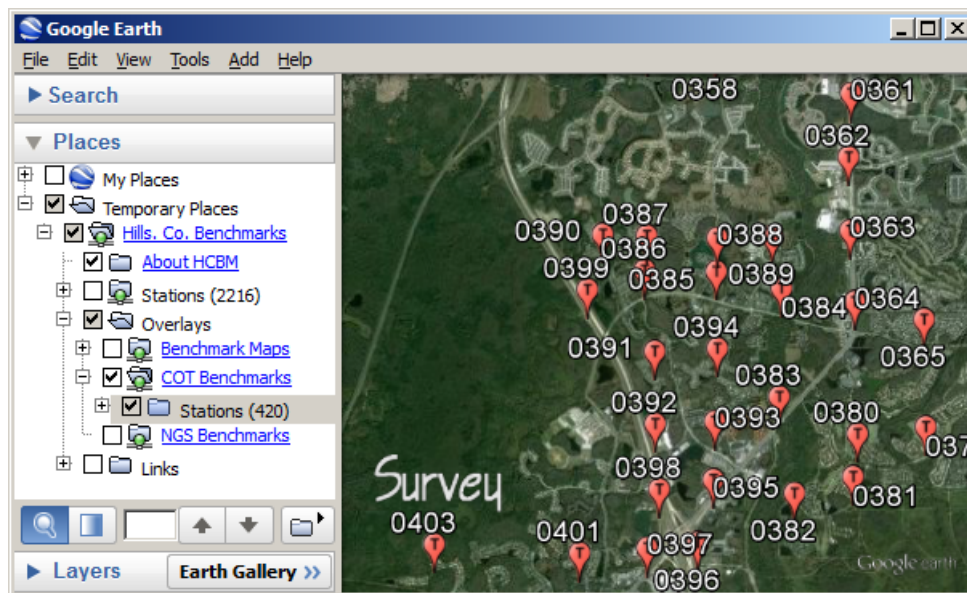


Figure 3. COT Benchmarks

Station balloons contain all information supplied by the source document. Copy and paste balloon contents into a Microsoft Word document for subsequent printing.

NGS Benchmarks

The *NGS Benchmarks* network link is an implementation of NGSCS (Davis and Turner 2008) that plots the approximate location of NGS benchmarks within four miles of the view center. Station balloons contain all information supplied by the NGS station list server (NGS 2009) and a hyperlink to the full NGS datasheet.

1. Position the point of interest (POI) in the center of the view. One way to do this is to double-click an unmarked location. To precisely position the POI in the center of the view, add a placemark at the desired location; then edit the properties of that placemark and reset the view.
2. Check the box beside the *NGS Benchmarks* network link. Range rings and station markers should appear within two minutes.
 - V (blue) = Vertical only
 - B (pink) = Both horizontal and vertical
3. On subsequent uses, reposition the POI and ensure that the network link is checked and selected. Then choose *Refresh* from the *Edit* menu, or right-click and select *Refresh* in the context menu.

Range rings are drawn at one-mile increments from the POI and collected in the *Regions* folder.

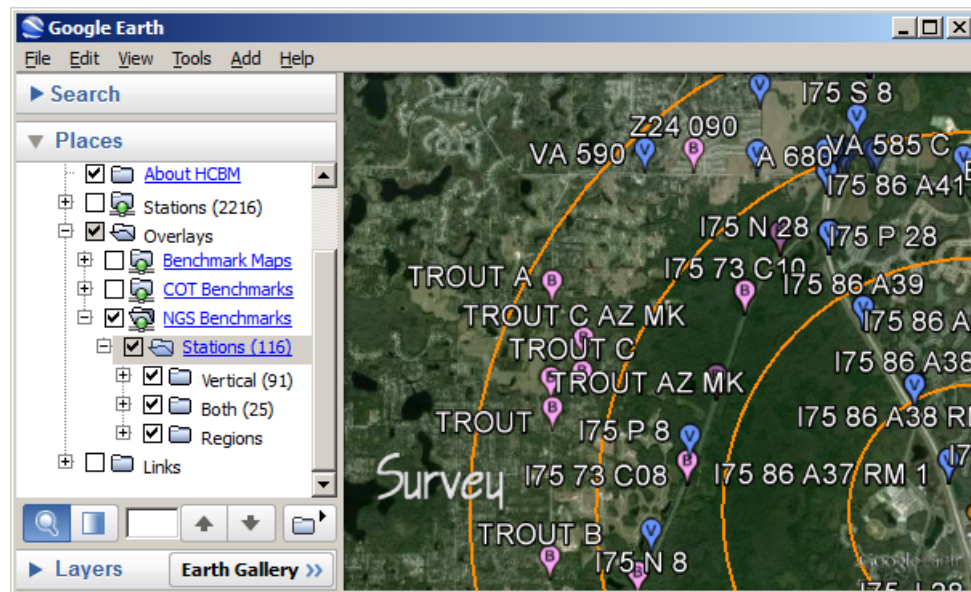


Figure 4. NGS Benchmarks

NGS benchmarks are plotted at full-precision datasheet coordinates. Benchmarks that are also horizontal control stations typically have precise geodetic coordinates with five decimal digits of seconds, while vertical-only marks are usually scaled to whole seconds.

CONCLUSION

Considerable attention was given to the accurate location of Hillsborough County benchmarks and the correct attribution of NGS PIDs, but it is likely that errors remain. Interested users are encouraged to contact the principal author with corrections.

It is probable that LABINS and the NGS will someday serve KML-formatted output directly to the client. In the meantime, Metzger + Willard, Inc. and George F. Young, Inc. are pleased to provide HCBM to the land surveying community and others who may wish to visualize Hillsborough County benchmarks in Google Earth.

ACKNOWLEDGMENTS

The authors wish to thank the following individuals for their help in implementing and testing HCBM: Tim Brown, PSM, Hillsborough County Geomatics Division; and Kemp Morris, PSM, Morris Surveying, Inc.

REFERENCES

- City of Tampa (2016a). "COT primary benchmarks."
(<http://www.metzgerwillard.us/hcbm/COT-Primary-Benchmarks-Ver-2b.zip>)
- City of Tampa (2016b). "Survey Section."
(http://www.tampagov.net/transportation/transportation_engineering/survey-section)
- Davis, T. and Turner, R. (2008). "Visualizing National Geodetic Survey control stations in Google Earth." *The American Surveyor* Nov. 2008.
(http://www.amerisurv.com/PDF/TheAmericanSurveyor_Davis-Turner-NGSandGoogleEarth_November2008.pdf)
- Florida Department of Environmental Protection (2003). "LABINS County Control Data."
(http://www.labins.org/xtra_data/county_data/hillsborough/)
- Google, Inc. (2009). "KML reference."
(<https://developers.google.com/kml/documentation/kmlreference>)
- National Geodetic Survey (2009). "NGS get_mark_list utility."
(http://www.ngs.noaa.gov/cgi-bin/get_mark_list.prl)